

THERMOPLUS™
4000
VERY WARM

DOWN TO
-22° C | -8° F

DUSTY MITT

CODE: 8136WM | SIZE: XS / L

DESCRIPTION: When cutting-edge design meets technology. Soft sheepskin, above average warmth and guaranteed water resistance thanks to its waterproof insert.

WARMTH INDEX: 4000 - Very Warm

FIT: Natural **MATERIAL:** Water resistant sheep leather, Water resistant sheep leather palm **INSULATION:** Multilayer Primaloft, Soft-touch lining with Polygiene treatment **DRY TECHNOLOGY:** Membra-Therm Plus **SUSTAINABLE VALUE:** 73% Organic **FEATURES:** Fur cuff, Metal studs decoration, Leather with crocodile pattern, Storm leash



35 black white



01 black



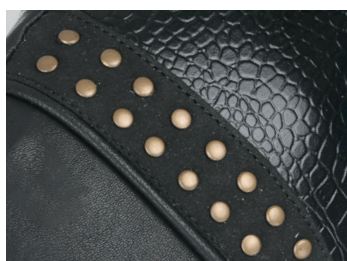
MULTILAYER PRIMALOFT®

Soft insulation fabric. An insulation that is water repellent! Unlike down, it won't hold water so it even keeps you warm when it's wet! A warm and soft feeling that offers good breathability.



MEMBRA-THERM PLUS

A highly breathable membrane insert that creates a waterproof barrier between exterior layer of the glove and the insulating materials. It optimizes warmth and comfort by keeping the hands dry.



METAL STUDS

Metal studs and sleek alligator pattern leather for a glint-inspired mitten.



COZY FUR

Stay warm and cosy. A thick fur cuff for optimum warmth and comfort. This model is ideal for adding a touch of glamour to your winter looks.