

THERMOPLUS™
2000

STD

DOWN TO
-10° C | 14° F

TOUR CABRIO MITT

CODE: 3490UM | SIZE: XS / XXL

DESCRIPTION: Abrasion resistant foldable mitten with windbreaker fabric with I-Touch leather palm and water-resistant finish, ideal for alpine climbing, ski touring and snowshoeing.

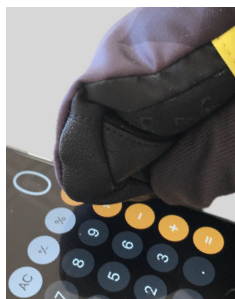
WARMTH INDEX: 2000 - Standard

FIT: Natural **MATERIAL:** Windbreaker fabric, Waterproof goat leather palm **INSULATION:** Primaloft, Hydrofill **DRY TECHNOLOGY:** Partial wind breaker

HIGHLIGHTS: I-Touch system **FEATURES:** Short cuff, Cabrio cover, Watch window, Safety leash



01 black



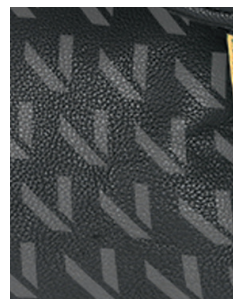
I-TOUCH SYSTEM

The "I-Touch" system allows you to use your smart phone without having to remove the glove.



MULTILAYER PRIMALOFT®

Soft insulation fabric. An insulation that is water repellent! Unlike down, it won't hold water so it even keeps you warm when it's wet! A warm and soft feeling that offers good breathability.



PRINTED PALM

A sleek icon pattern applied to the hood palm for an extra touch.



STOWABLE FLAP HOOD

The Windbreaker Trilaminate wind hood can be easily flipped off in mild weather. Perfect when fishing, hunting photographing, or ski touring.



WATERPROOF GOAT LEATHER

A soft waterproof leather, used mainly for ski gloves in areas which are exposed to high abrasion such as the palms or between the thumb and index finger.



SAFETY LEASH

This cord is used to secure the glove to your hand with an elastic strap. A big advantage when you don't want to wear gloves but want to keep them attached to the wrist.